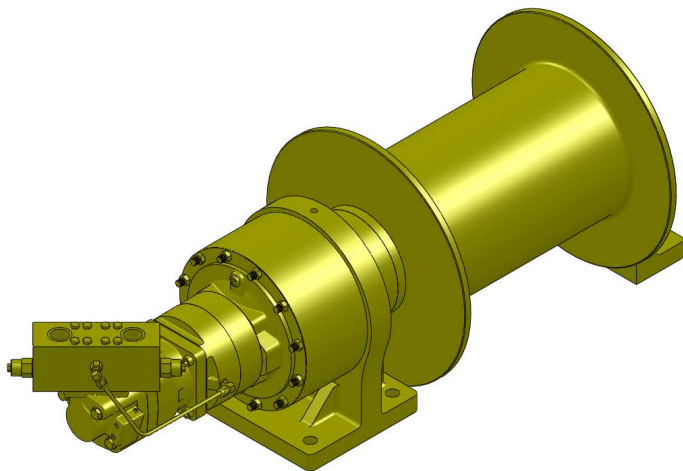


## Series LS32K

### *Hydraulic Planetary Cable Winches*

Lift-Safe® hydraulic winches are specifically designed for lifting applications and optimum load control. Engineered for enhanced safety with redundant braking systems, and available in a variety of configurations. Lift-Safe® winches utilize the **DUET-SAFE® Double Action Braking System** to provide both static and dynamic braking. **Series LS32K** direct drive winches are used for industrial pulling and hoisting applications, fishing boats, marine craft, drill rigs, cranes, factory material handling and roll off waste handlers.



**UP TO 15,000 POUNDS  
CAPACITY**

## Lift-Safe® Hydraulic Cable Winches – Standard Features

### **BRAKE**

- **DUET-SAFE® Double Action Braking System** combines a powerful spring applied, hydraulic released brake with a double counter balance brake valve to automatically hold loads when hydraulic pressure is released and control speed during lowering operations. Winch is ideal for high speed lifting and pulling applications or wherever load holding is critical.

### **GEAR CASE**

- Made of high strength steel. Completely sealed for oil enclosed operation and to keep dirt out.

### **PLANETARY GEAR**

- High Efficiency Double Reduction – Rugged - Built to Last.

### **GEAR RATIO**

- 17:1 standard.

### **BEARINGS**

- Drum Shaft is supported by two heavy duty oil lubricated bearings in gear case, and one permanently sealed ball bearing in end housing.

### **DRUM SHAFT**

- 4" diameter heat-treated alloy steel

### **CABLE DRUM**

- Tough all steel construction resists breakage or warping.





*"Quality Since  
1910"*

## Series LS32K

### Model Selection from Performance Data

**MODEL EXAMPLE:** LS32K-15.0M-L2012-17

LS32 = Lift-Safe® Series LS32K  
with 4" Drum Shaft

K = Fail-Safe Brake with  
Separate Motor

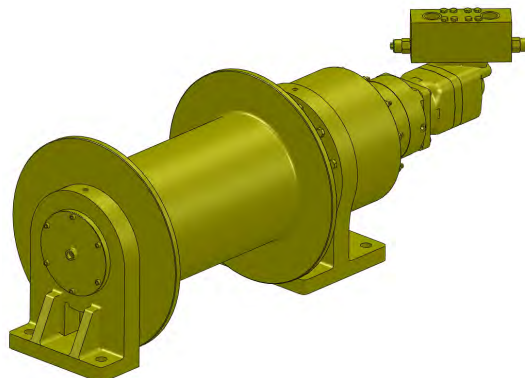
Hydraulic Motor Designation  
15.0M, 11.9M

Gear Ratio  
(17:1)

Drum Designation  
S2012, L2012, & XL2012  
With 12.0" Core

### DRUM CAPACITY

CABLE SIZE ( INCH )	CABLE CAPACITY ( FT. )		
	S2012 DRUM	L2012 DRUM	XL2012 DRUM
Ø3/4"	150	260	375
Ø7/8"	95	165	235



# Lift-Safe® Planetary Cable Winches

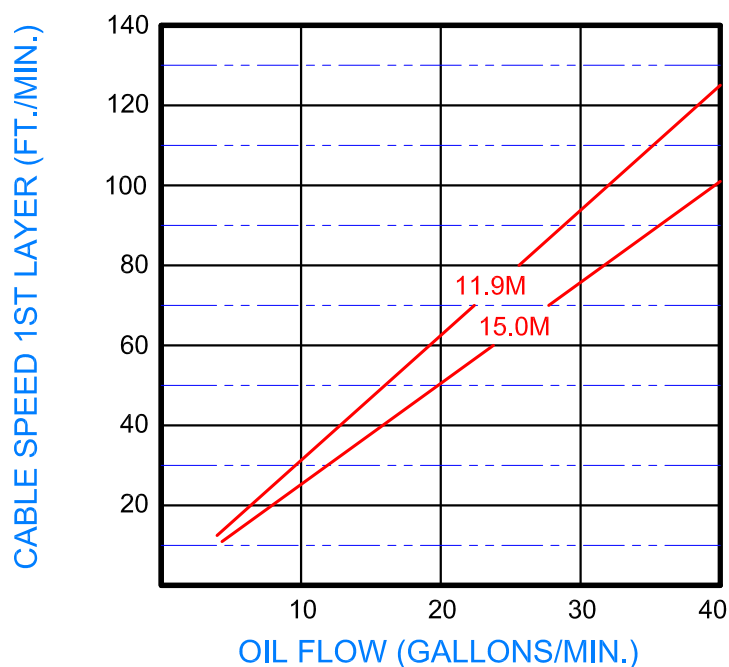
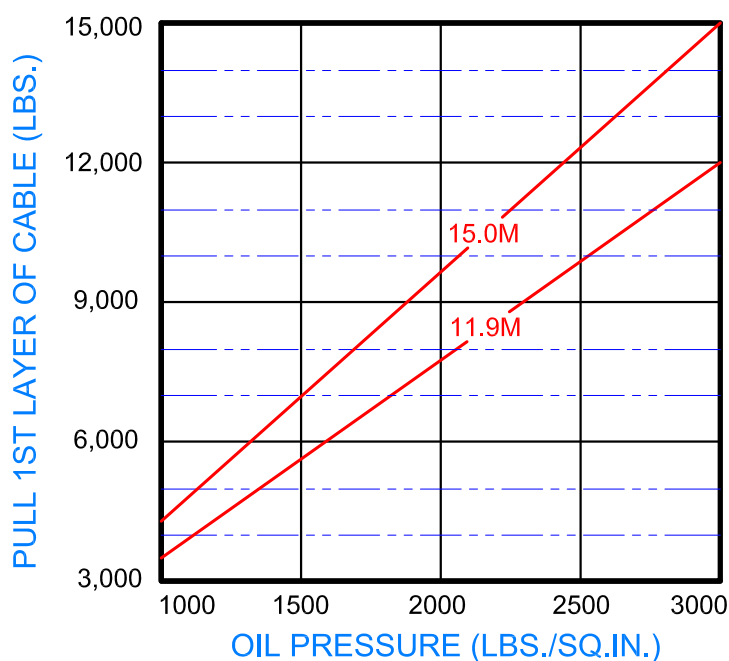
## Series LS32K W/ 12" Core

With Hydraulic Fail-safe Brake  
Model Selection from Performance Data



"Quality Since  
1910"

17:1 RATIO



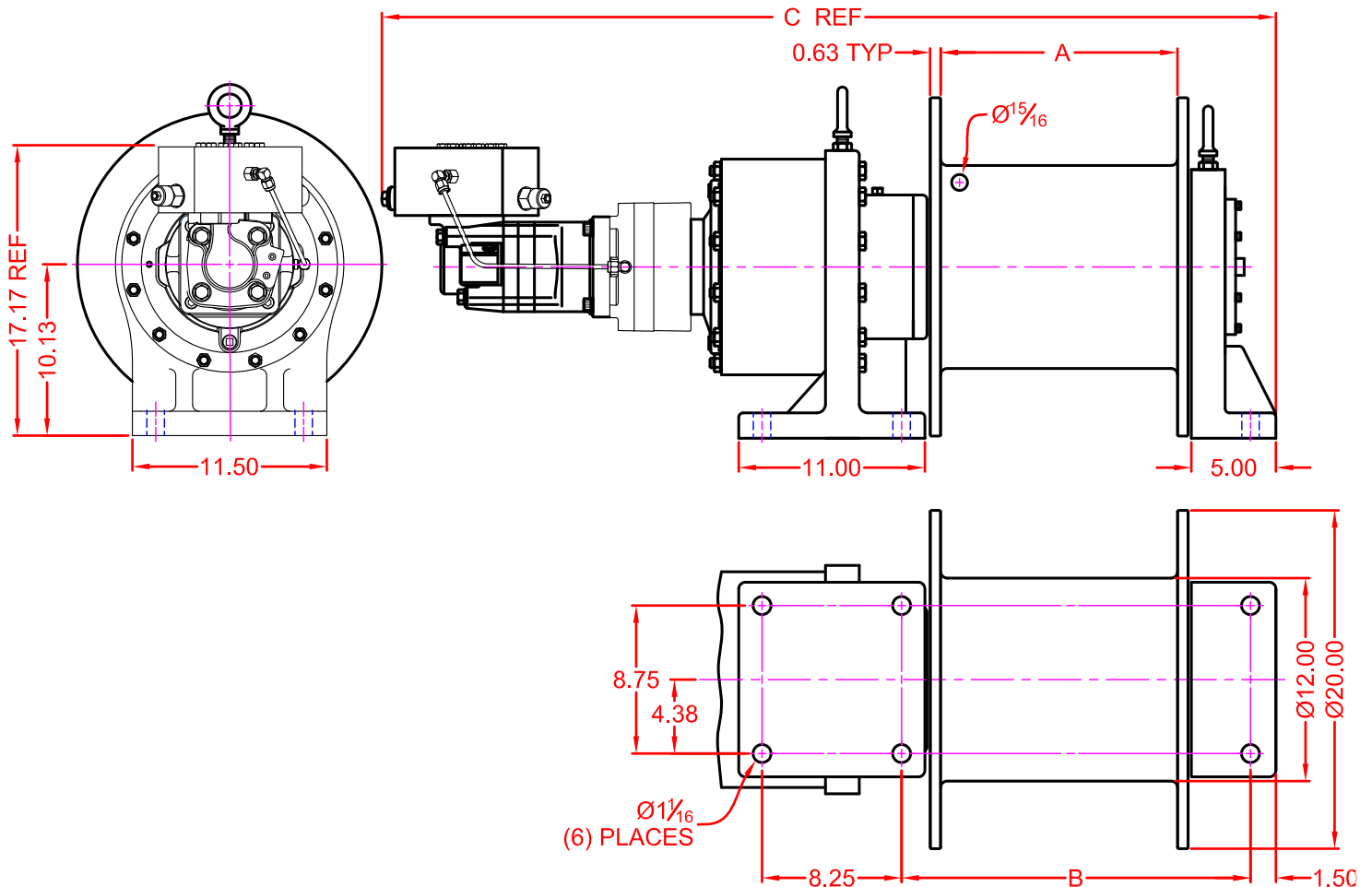


**"Quality Since  
1910"**

# LIFT-SAFE®

## Dimensional Drawings

**Series LS32K K JH 'G2012, L2012'UbX'X@2012'8 fi a  
Base Mount Model - Direct Drive**



WINCH DIMENSION	DRUM DESIGNATION		
	S2012	L2012	XL2012
A DIMENSION	8	14	20
B DIMENSION	14.63 ±0.06	20.63 ±0.06	26.63 ±0.06
C DIMENSION	46.86	52.86	58.86

CABLE SIZE ( INCH )	CABLE CAPACITY ( FT. )		
	S2012 DRUM	L2012 DRUM	XL2012 DRUM
$\varnothing 3/4"$	150	260	375
$\varnothing 7/8"$	95	165	235



## **LS32K SERIES MODEL SELECTION**

### **11.9M MOTOR**

LS32K-11.9M-S2012-17

LS32K-11.9M-L2012-17

LS32K-11.9M-XL2012-17

### **15.0M MOTOR**

LS32K-15.0M-S2012-17

LS32K-15.0M-L2012-17

LS32K-15.0M-XL2012-17



Correct choice of Directional Control Valves for Lift-Safe® Winches

All **Lift-Safe®** Winches require a **Motor Spool Control Valve**.

That is the valve's work ports are **open** to tank in neutral position.

\*Winches require ridged mounting plate.  
See owner's manual for information about proper mounting  
plate thickness or call Bloom Sales Engineer at factory

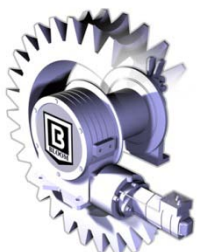
## **WARNING!**

Goods are not intended for use in the moving or lifting of persons!

The winches described herein are neither designed nor intended for use or application to equipment used in the lifting or moving of persons and it is understood that all such use shall be at the sole risk of the user.

The cable clamps on winches are not designed to hold rated loads. A minimum of 5 wraps of cable must be left on drum barrel to guarantee holding of rated load.

Applications of winch where life would be endangered by any event are not recommended.



## **BLOOM Manufacturing Inc.**

### **Winch Division**

1443 220<sup>th</sup> Street,, Independence, Iowa 50644

FAX 319-827-1140 PHONE 319-827-1139

[www.bloommfg.com](http://www.bloommfg.com)

©Copyright 2015 Bloom Mfg. Inc.